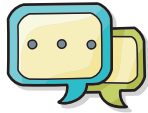




Self-Evaluation Checklist: Initiating the PTR-F Process

Prevent-Teach-Reinforce for Families (PTR-F) is a model for helping families to resolve their children's serious challenging behaviors in home and community settings. Initiating the PTR-F model involves building a collaborative team, establishing rapport, and forging a connection with families. Once each step in this checklist is achieved, you're ready to move to the next phase of the process.

1



Have the family and facilitator established good communication and agreed to adopt the PTR-F model?

2



Have the family and facilitator agreed on additional team members and invited them to participate?

3



Have long-term goals been discussed as a vision for the child and family?

4



Have short-term goals for challenging behaviors and desirable behaviors been listed on the PTR-F Goal Sheet?

5



Has a specific challenging behavior been identified as a target, and has it been operationally defined?

6



Have anchors for challenging behavior on the Behavior Rating Scale (BRS) been carefully specified so that data collection will be reliable and sensitive to behavior change?

7



Have the procedures of BRS data collection (e.g., who, when) and data summary been agreed upon?

8



Have the data collection procedures been implemented so that all are comfortable with their roles and how data will be shared?

