

Introducing...

well

SCREENING®



TOOLKIT CONTENTS

At-A-Glance	2
Benefits	4
Meet the Developers	5
How it Works	6
Sample Results	8
Get Started	10

BROOKES

Connect with us! [f](#) [t](#) [p](#) [v](#)
www.brookespublishing.com | 1-800-638-3775

The Well Screening® and the Well Screening logo are trademarks of Bolster Learning Systems.

To learn more and order, visit:

www.brookespublishing.com/well-screening





well | At-a-Glance

SCREENING®

What is the Well Screening®?	An online screener (www.wellscreening.com) designed to identify pre-kindergarten and kindergarten children at risk for speech, language, and learning disorders.
Age range	4:5 to 6:11
Domains evaluated	Receptive language, expressive language, attention, early literacy, reading, math, speech sound production, motor
Administered by	Any educator or professional in a school or clinical setting. <i>Note: The Speech Sound Subtest, which is a supplementary component and does not have to be completed to get comprehensive results, must be completed by an SLP or other communication professional.</i>
Time commitment	About 20 minutes
How is it delivered	Administered on a computer or tablet, Well Screening is completed by the student, who responds to prompts from animated characters. Select subtests require an adult helper to indicate the student's responses on a separate device.
How is it scored	Most of the subtests are scored automatically. Others require an adult to check the box next to every item the child answers correctly (on their second device). The Scoring Form shows exactly what the child must say for the answer to be marked as correct.

well | At-a-Glance

SCREENING®

When should it be conducted	Spring of PreK through Fall of 1st grade
Training	No formal training is required to administer the Well Screening. The manual and online instruction video provide directions. We will create a “how to” webinar to provide more help for those who need it.
Available products	<div>  <p>Well Screening® Starter Kit, Research Edition ISBN: 978-1-68125-479-1 Includes: Ebook manual and 25 screening codes (+1 practice code)</p> </div> <div>  <p>Well Screening® Supplementary Screening Codes ISBN: 978-1-68125-506-4 Includes: 25 screening codes (+1 practice code) <i>For repeat customers who need further codes.</i></p> </div>

Additional Resources

- Watch a short (90-second) introductory video ([Watch now >>](#))
- Read an excerpt from the Well Screening Examiner's Manual ([Read now >>](#))
- Review the evidence behind Well Screening ([Read now >>](#))



Benefits of well

SCREENING®

Today's schools have been tasked with identifying risk for learning disabilities *before* children have a chance to fail—and the earlier identification starts, the better. Now exclusively distributed by Brookes, the **Well Screening** tool is your quick, reliable, and comprehensive way to identify kindergarten students (ages 4–6) who are at risk for learning disabilities, including developmental language disorders, dyslexia, attention-deficit/hyperactivity disorder (ADHD), dyscalculia, and speech sound disorders. With just one 20-minute screener, speech-language pathologists (SLPs), special and general educators, and school psychologists can examine student performance in multiple skill areas that predict their future success in school.

The Well Screening . . .



Identifies at-risk students early, so that further evaluation and intervention can be provided as soon as possible.



Covers areas missed by other screeners—looks at many domains that research identifies as important for school success.



Pinpoints specific strengths and weaknesses in areas that matter most for academic success.



Is fun and engaging, with animated characters that kids love to interact with.



Is easy for adults to administer and score.



Has a digital-only format that can also be delivered via Zoom or another video interface.



Is backed by more than 30 years of clinical experience and drawn from multiple specialized fields: speech-language pathology, education, psychology, and child development.



Is great for monitoring—can be used to follow the child's progress in the fall, winter, and spring of the kindergarten year.

Meet the Well Developers

SCREENING®



Barbara L. Ekelman, Ph.D., CCC-SLP

is a speech-language pathologist and learning specialist in private practice, adjunct associate professor in the Department of Psychological Sciences and clinical associate professor in the Department of Pediatrics, School of Medicine, Case Western Reserve University (CWRU). She established the school-aged language and literacy course at CWRU and continues to teach this graduate-level class. Dr. Ekelman has 30+ years of clinical and research experience in childhood, adolescent, and adult language and learning disorders. She has designed research, presented papers, and published articles in the areas of language-learning disabilities, childhood stroke, attention-deficit/hyperactivity disorder (ADHD), autism (hyperlexia), dyslexia, and developmental apraxia. Since 1993, she has developed and administered kindergarten screenings. Her screenings identify language and learning profiles that help guide classroom instruction and support early intervention. She serves on the advisory board for the Early Intervention Related Services Training Program at CWRU, which is funded by the Department of Education.



Debra A. Dutka, M.A., CCC-SLP

began her career at the Cleveland Hearing and Speech Center, where she became coordinator of the Pediatric Speech-Language Services Department and the Language-Learning Disabilities Program. She taught the preschool language and learning course in the Department of Communication Sciences, CWRU. For the past 30+ years, Ms. Dutka has worked in private practice and has served as a consultant to area public and private schools. She evaluates and treats children with autism, speech-language delays, and language-learning disabilities.



Karen St. Amour, M.A.

is a certified, licensed learning disabilities teacher specializing in dyslexia. Ms. St. Amour has worked in a variety of settings including public and private schools and private practice. She presents at local and national conferences and has conducted teacher training as a Wilson Language Trainer. As a contributing editor for Educators Publishing Service, Inc., she worked on the Multisensory Teaching Approach and Alphabetic Phonics Programs. Ms. St. Amour has been an active member of the International Dyslexia Association (IDA) for 40 years. She is the founding president of the Northern Ohio Branch of IDA and served on the board of directors and advisory board for 25 years.

How the well works

SCREENING®

1 Prepare your devices for screening

Visit www.wellscreening.com on the student's device and on the adult helper's device.

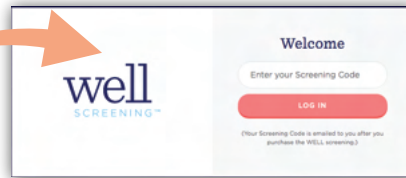
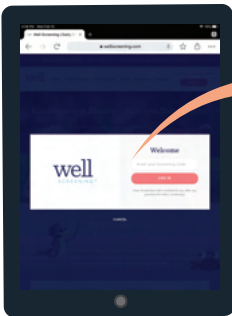


Device Options

	Student device	Helper device
Computer	✓	✓
Tablet	✓	✓
Smartphone		✓

2 Enter a screening code

On both devices, click "Login" and enter the same screening code. Then, select "My Screening."



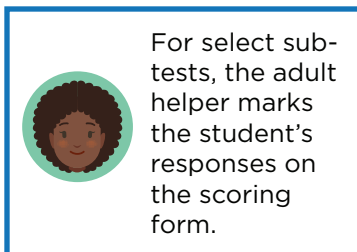
On the helper's device, select "Prepare Helper's Scoring Form."



Then, on the student's device, select "Begin Screening."

3 Begin screening

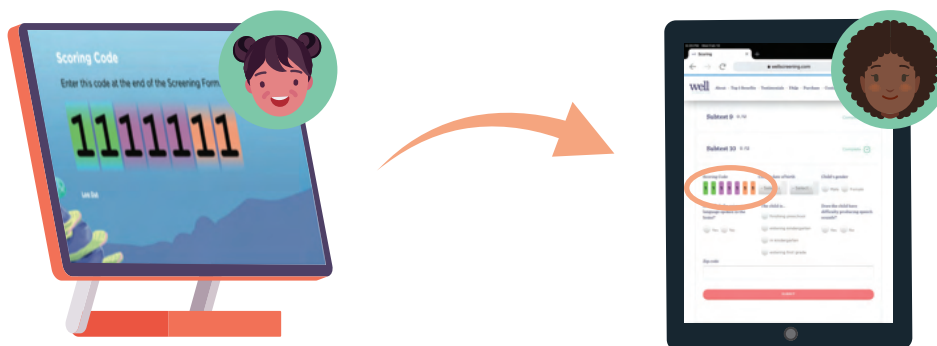
Animated characters guide the student through each subtest. Screening takes about 20 minutes.





4 End and submit screening

When complete, a scoring code will appear on the student's device. Enter it on the scoring form.



5 View results

The student's Learning Profile will automatically generate. "Next Steps" link to games, activities, and websites to bolster skills in each domain, as well as suggestions for professional referrals.



Get an inside look!

Watch a webinar with Barbara Ekelman, Ph.D., CCC-SLP, one of the developers of Well Screening. In this free, 1-hour webinar Dr. Ekelman:

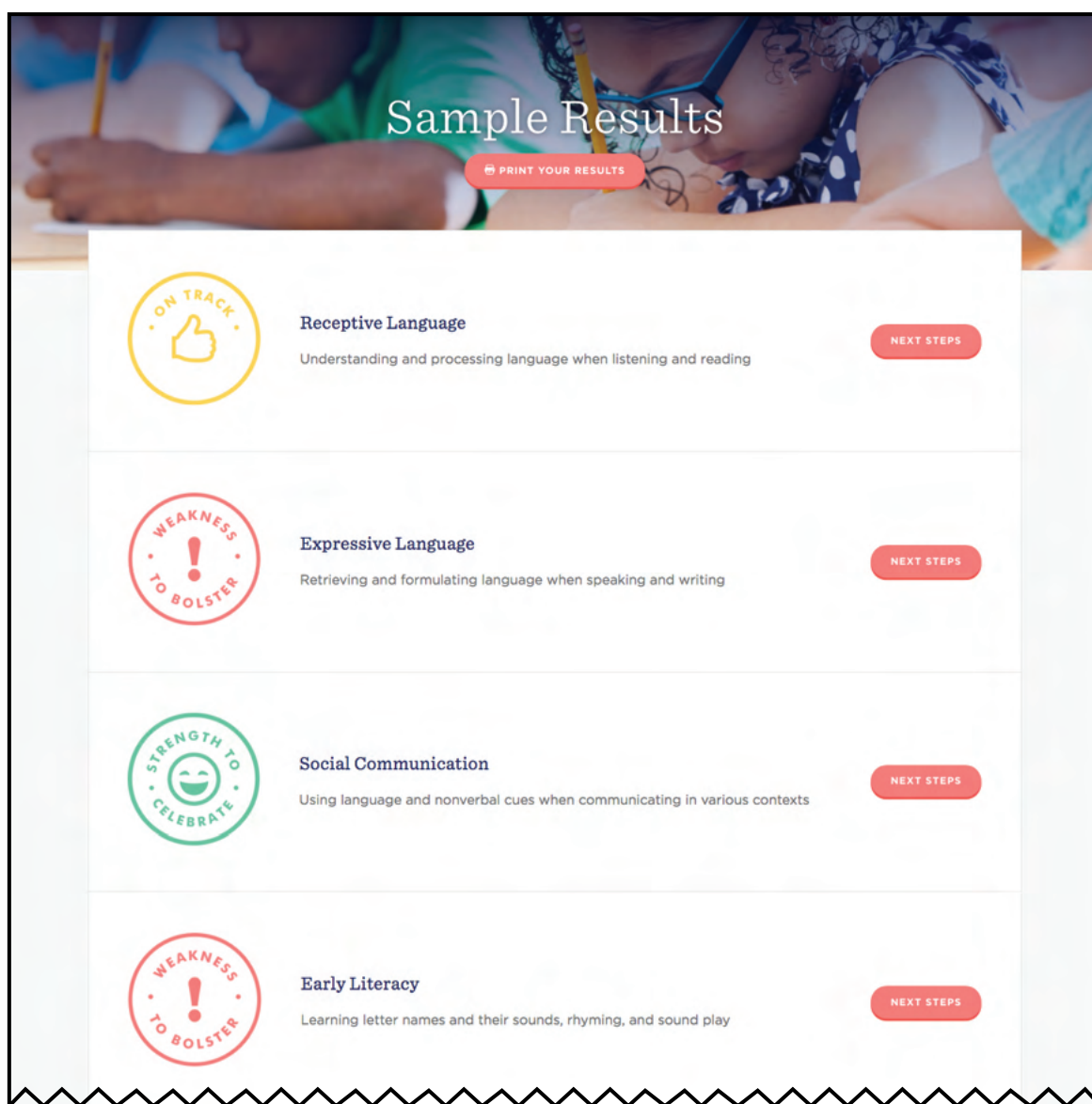
- Discusses the current state of kindergarten literacy
- Presents the theory behind the Well Screening
- Shows the Well Screening in action
- Shares how results can be used to inform next steps

<https://bpub.fyi/Well-Screening-Webinar>

Sample Results

Once the screening is complete, Well Screening automatically generates a detailed learning profile of the child's skills and areas of need, with scaled scores and percentile ranks included to help guide instruction for targeted areas.

See sample results below. To review the sample results in greater detail, you may visit www.wellscreening.com/results.





Reading

Blending sounds into words (decoding) with fluency and comprehension

NEXT STEPS

Attention

Maintaining focus and regulating behavior to learn and store information

NEXT STEPS

Math Calculation

Counting, grouping objects, and calculating simple math facts and operations

NEXT STEPS

Speech Sound Production

You did not identify the child as having difficulty producing speech sounds.

NEXT STEPS

The child's performance is compared to normative research and grade norms and placed into one of three categories: A Strength to Celebrate, On Track, or a Weakness to Bolster. The goal is for all children to reach their academic potential by celebrating strengths and bolstering weaknesses through early identification of learning profiles. A Weakness to Bolster may simply indicate that more exposure to a skill area(s) is needed.

Child's Information

The child is in kindergarten
Date of birth: 02/2012
Gender: Male
English the primary language spoken at home? Yes
Child have difficulty producing speech sounds? No

Child's Subtest Scaled Scores

Subtest	Scaled Score
Language Processing	10
Number Sequences	12
Word Sound Play	≤7
Confrontational Naming	≤7
Pragmatics	≥13
Calculation	≥13
Language Formulation	11
Letter Recognition	≤7
Real Word Reading	≤7
Nonsense Word Reading	N/A

How to Interpret Child's Scaled Scores

Scaled Score	Percentile Rank	Classification
≥13	≥84	Strength to Celebrate
12	75	Strength to Celebrate
11	63	Strength to Celebrate
10	50	On Track
9	37	On Track
8	25	On Track
≤7	≤16	Weakness to Bolster

Scaled scores have a mean of 10 and a standard deviation of 3.

If the child performs below expectations on three or more subtests (scaled score ≤ 7), further testing should be considered.

Supplemental Downloads

Motor Skills Checklist: Download
Speech Sound Production Subtest: Download | Play Video

Copyright:
© 2021 Bolster Learning Systems, LLC All Rights Reserved.

PRINT YOUR RESULTS

Get started today!



Well Screening® Starter Kit, Research Edition

By Barbara L. Ekelman, Ph.D., CCC-SLP, Debra A. Dutka, M.A., CCC-SLP, & Karen St. Amour, M.A.

Includes an ebook Examiner's Manual and
25 screening codes (+1 free practice code)

Stock #: 54791 | March 2021 | 102 pages (ebook) |
ISBN 978-1-68125-479-1

www.brookespublishing.com/well-screening

